

MAX Data Collection Monitor



Installation Manual

MDCM Version 2006 for MAX v4



Table of Contents:

Installation	3
Run InstallMDCM_2006.EXE:	3
MAX DLL's:	3
Ten Implementation Steps:.....	5
Upgrading to MAX v4.....	8
Updating Screens.....	9
Moving to a New Computer:	10
Using the Simpterm (Shareware) Telnet Client	11
Support:	12

Installation

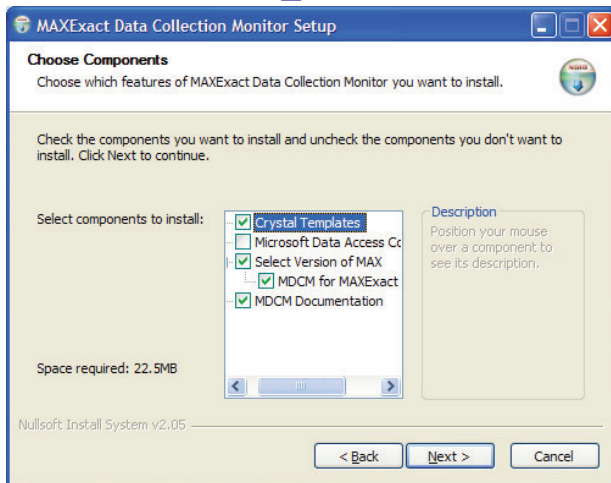
The MAX Data Collection Monitor requires Windows 2000, Windows 2003 or Windows XP, which is connected to a network using TCP/IP protocols. The PC must have access to both the data collection devices and MAX data. A Pentium or better machine with at least 512 MB of RAM and 100MB of free disk space is recommended. The monitor program functions as a server to the data collection devices and will typically have several simultaneous users. Therefore installing the application on a dedicated computer will insure optimum service. Performance will vary depending on the level of activity, the throughput on the network and the resource load of the installed-to machine.

The monitor program functions as a server to the data collection devices and will typically have several simultaneous users. Therefore, installing the application on a dedicated computer will insure optimum service.

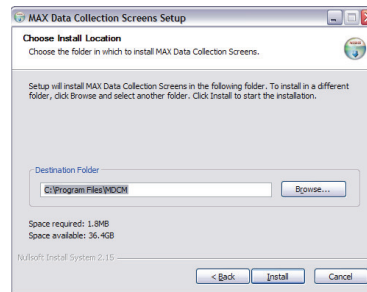
Updating a Currently Installed Version

As a precaution, make sure that you have a Backup of MDCParams.MDB, extMDCM.MDB and all Crystal Report files, which are in the application folder.

Run InstallMDCM_2006.EXE:



Installing Screens: Run ConfigScreens.EXE to load your configuration. Select the same directory that you used to install the application.



MAX DLL's:

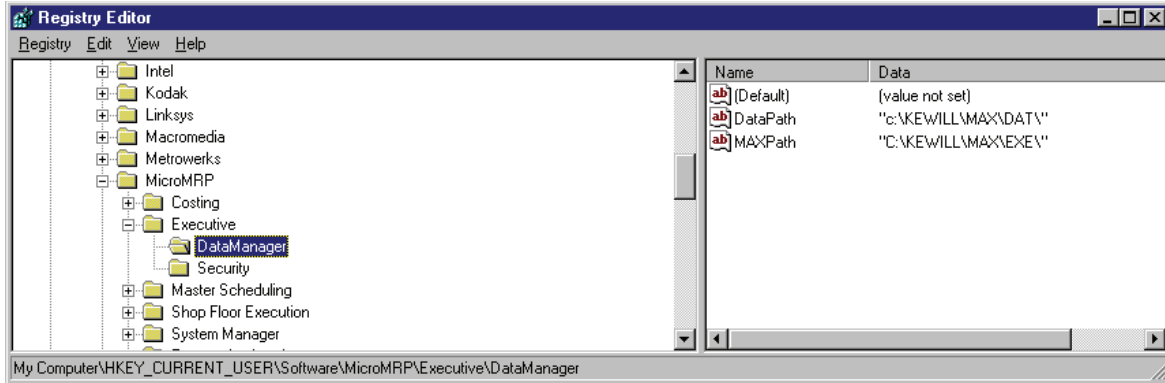
MDCM uses MAXUpdate for processing standard transactions. MAXUpdate is a set of DLL's that provide a library of MAX functions. MAXUpdate is a separate module provided by Exact, please consult with the MAXUpdate documentation for more information. Copy the following MAXUpdate files into the MDCM folder or make them available from a search path:

MAX DLL'S
MAXEXEC2.DLL
MAXBTRV2.DLL
MAXTRAN2.DLL
MAXORDR2.DLL

These files will be installed by the MAX Client Setup routine in \MAX\MFW2 and will reside in the server in \EXACT\MAX\NET\UPDATES\MFW2. As MAX is updated it is important to also update the files that are used by the MDCM application.

MAXORD2.DLL is only needed for KANBAN functions.

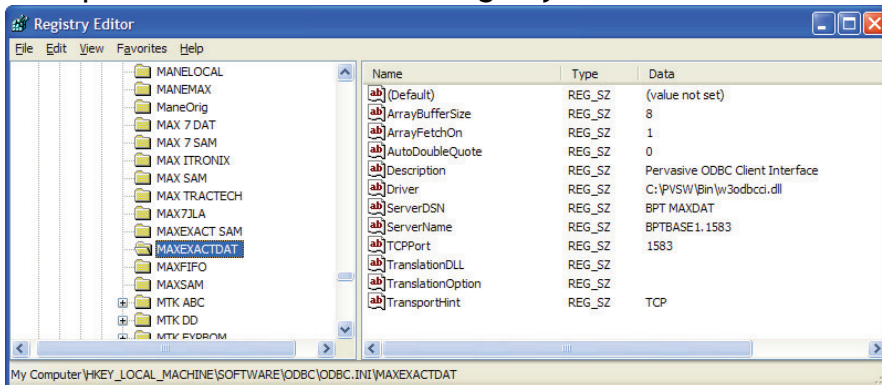
MDCM will look in the registry for the location of the MAX data:



If necessary, use the included MDCM Tools data paths function. The entry is stored in the following registry location:

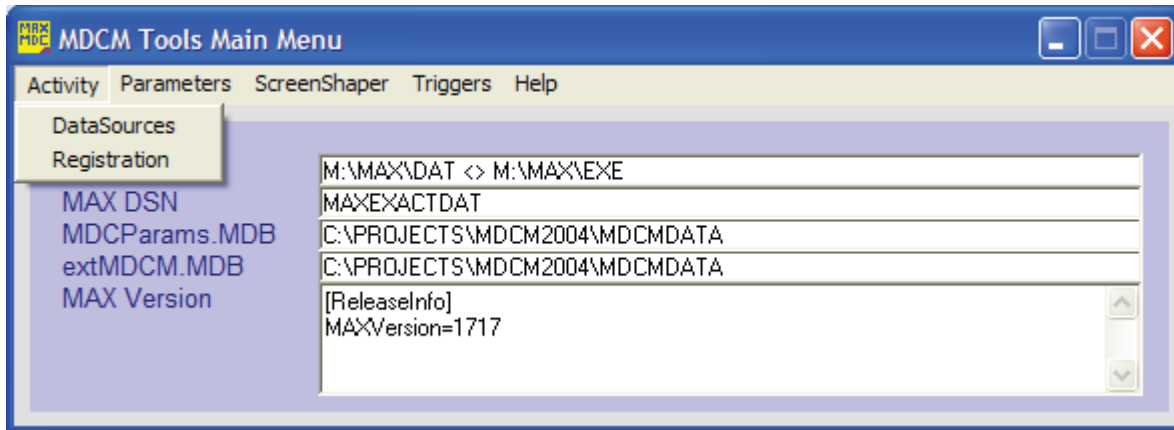
HKEY_CURRENT_USER\Software\MicroMRP\Executive\DataManager\DataPath = G:\Exact\MAX\DAT (enter your MAX data location as appropriate)

The specific MAX DSN is in the registry based on its name as follows:



MAX Data Collection Monitor - Installation Manual

MDCM Tools is used to administer parameters and options for MDCM with the following functions:

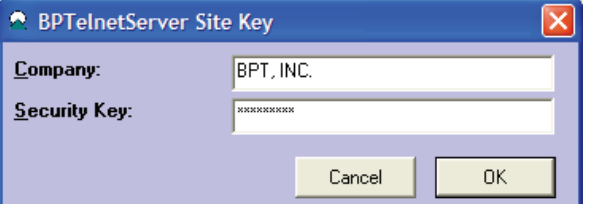
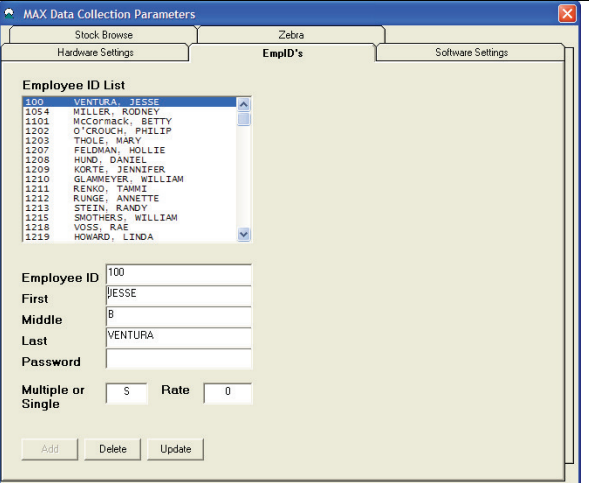
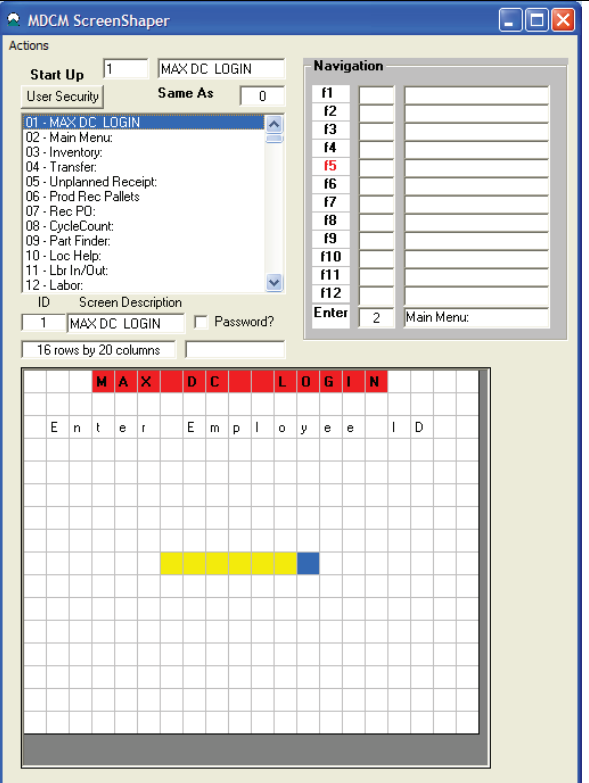
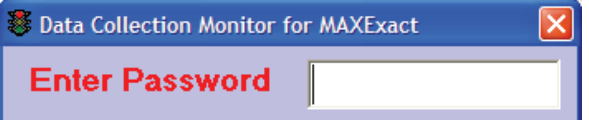


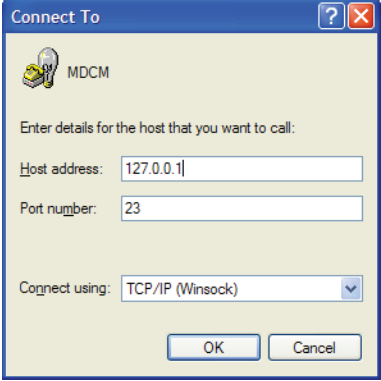
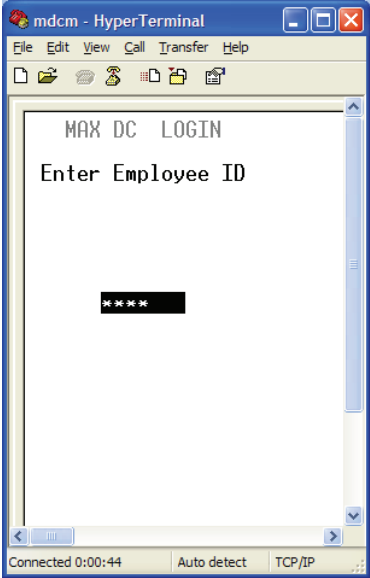
- 1) ScreenShaper - customizing screens
- 2) Parameters - settings needed to run MDCM
- 3) Triggers - setup Triggers
- 4) Data Paths - set or change MAX and MDCM data paths.
- 5) Register - enter the user registration
- 6) Support - Support Web Site

Ten Implementation Steps: after the software has been installed the following steps are required to make it functional. To begin, start the MDCM Tools.

<p>1</p>	<p>Login - default password is CYCLONE</p>	
<p>2</p>	<p>Set the Data Source and Data Paths for MAX. This should be set to a test data set to begin with to allow for testing and training. The ECI Data Path is only needed if using pre MAX 3.7 and running optional automated ASN generation. The locations for MDCParams.MDB (Screen Source) and extMDCM.MDB (Triggers) will default to the application folder.</p> <p><i>Please note that making entries here will affect the same registry entries that the MAX Client uses.</i></p>	

MAX Data Collection Monitor - Installation Manual

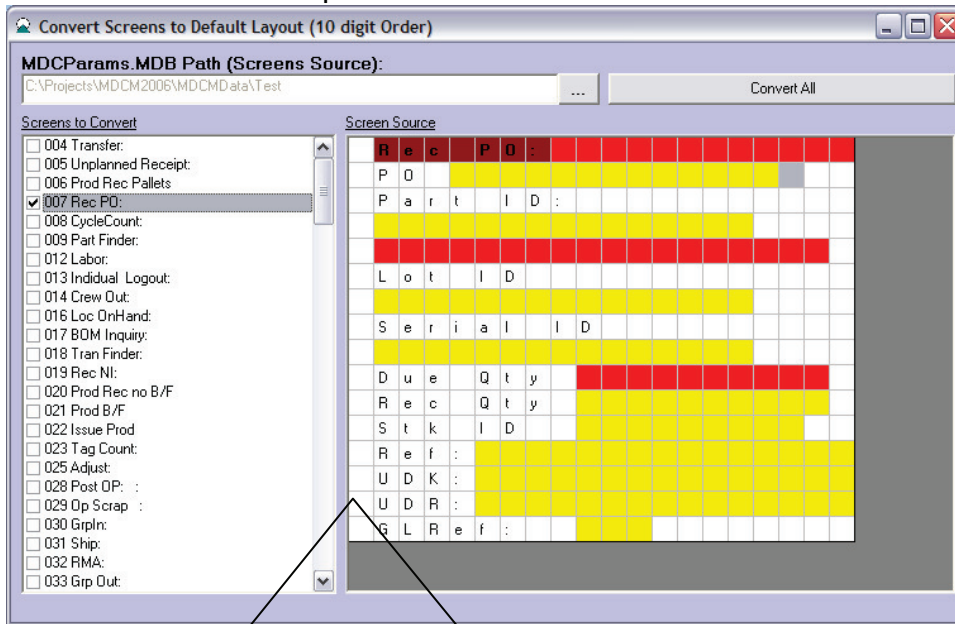
<p>3</p>	<p>Register the software. You should have received a registration key which activates the software.</p>	
<p>4</p>	<p>Make sure that there are entries in the MAX Employee Master. If you do not have MAX Labor Tracking then you will need to use the EmpID's maintenance tab to enter the users.</p>	
<p>5</p>	<p>Screen startup, formats, navigation and security. The screens will be functional as-is, but can be modified using the ScreenShaper tool as needed.</p>	
<p>6</p>	<p>Start the Monitor. The Default Password is CYCLONE.</p>	

<p>7</p>	<p>Connect a Client. HyperTerminal which comes with Windows can be used as a client as can numerous other terminal emulation clients.</p> <p>MDCM uses function keys 1 -12 for screen navigation. HyperTerminal requires that num lock to be on for the keys to work.</p>	 
<p>8</p>	<p>Training: ScreenShaper, Parameters, Triggers and User.</p>	
<p>9</p>	<p>Pilot Test: Labels and procedures. Where are the bar codes coming from? When, where and how are labels generated?</p>	
<p>10</p>	<p>Go Live</p>	

Upgrading to MAX v4

1. MDCM parameters will be moved by the 2006 install to the following locations:
 - a. Registration and hardware settings:
HKEY_CURRENT_USER\Software\BalancePoint\BPTelnetServer\Params
 - b. MDCM parameters: HKEY_CURRENT_USER\Software\BalancePoint\MDCM\Params
2. Screen layouts: a optional utility can be installed in the MDCM\DBUtils sub folder, with a desktop icon created, which can automate converting screens to accommodate the new 8 digit order in MAX.

ConvertMDCMScreens: updates screens to standard default formats.



1. Back up the current MDCParams.MDB from the \MDCM folder.
2. Select the path if different than current.
3. Convert selectively by clicking on the specific screen or hit "Convert All" button to convert all screens showing.

Screens Affected: Only standard screens will be updated. Screens added in the 500 series of ID's will be ignored. If screens have been significantly modified they may need to be converted using the ScreenShaper tool.

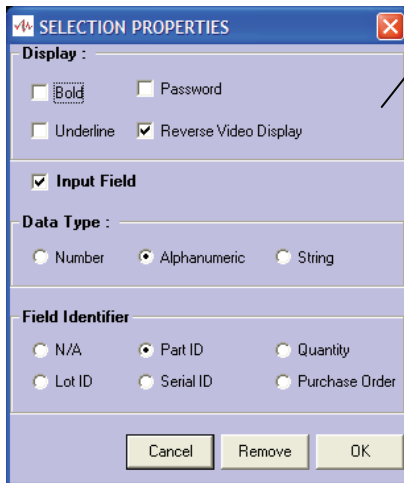
3. Crystal XI will be supported for printing labels and documents using the triggers.

Updating Screens

The ScreenShaper tool will look in the directory for NewMDCMScreens.MDB which will contain a table called SidNav which has in it copies of any new screens which may have been created. All screens in this table will be imported into MDCParams.MDB to be used by the MAX Data Collection Monitor. Navigation for existing screens will be kept. The NewMDCMParams.MDB will be deleted once it has been imported.

Changing Screen Fields

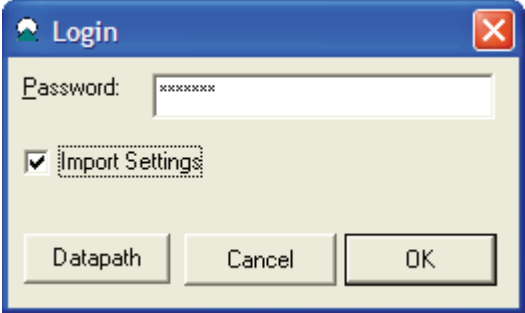
To change the attributes of a field, place the cursor on the field and double click. To lengthen or move a field, click on the “Remove” button. Add the field back by highlighting the cells and hitting control /E.



Input fields are identified by their sequence on the screen. Generally it is not possible to delete an input field. Labels can be removed or modified as needed. To hide an input field, for example if you don't use serial control, and want to hide the serial labels and input fields:

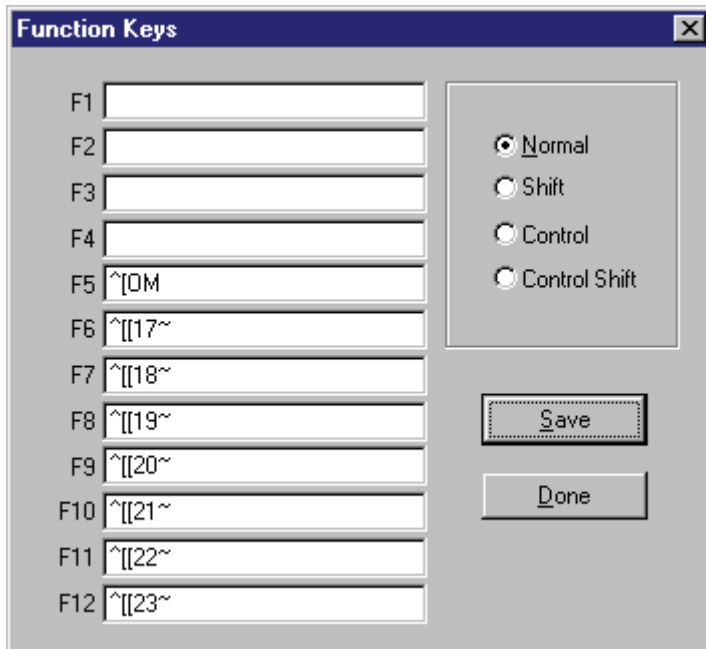
- 1) Remove the label
- 2) Remove the field
- 3) Add the field back as a one character string Input field, without distinguishing “Display” attributes. Place it in sequence on the screen wherever you have room.

Moving to a New Computer:

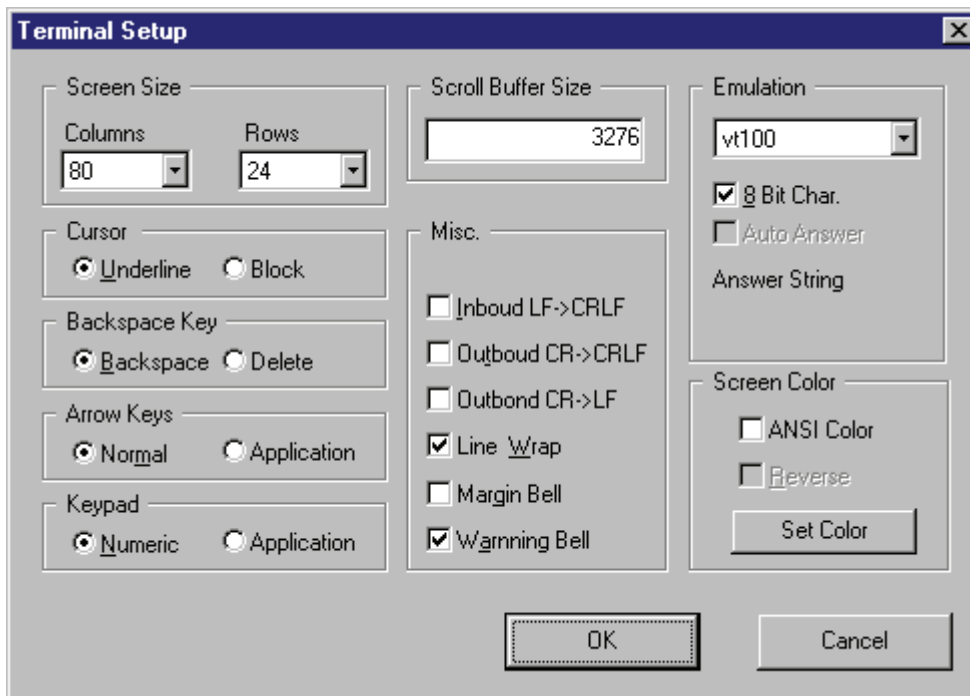
1	Run InstallMDCM.EXE on the new computer.	
2	Copy the following files from the current installation:	<ol style="list-style-type: none"> 1) MDCParams.MDB 2) extMDCM.MDB 3) MDCMRegs.reg 4) BPTNSRegs.reg
3	<p>On new computer, Login - default password is CYCLONE</p> <p>Check "Import Settings" to import all the settings from the current installation.</p>	
4	Copy MAX DLL's into the application folder, or make them available with a search path. (See installation above.)	<ol style="list-style-type: none"> 1) MAXBTRV2.DLL 2) MAXECEC2.DLL 3) MAXORDR2.DLL 4) MAXTRAN2.DLL
5	If the new IP address is different than the current IP, update the clients to connect to the new address (or name.)	

Using the Simpterm (Shareware) Telnet Client

Function Keys: Using the Options/Function Keys Tab - make the the following entries:



Activating the Backspace: Using Options/terminal - make sure the Backspace key is selected:



Support:

- 1) <http://www.maxtoolkit.com> MAXTools Support (Requires a User / Password)
- 2) support@bptechnologies.com
- 3) 847 328-7911
- 4) MAX tech Support 800 number

Support Site:

Welcome! [Portal Home](#) [Portal Documentation](#) [Logoff](#)

MAXToolkit Support Center

[Home](#) [Discussions](#) [Adv Forecast](#) [Consignment](#) [LabMan](#) [LeanMAX](#) [LeanVoucher](#) [MAX Changer](#) [MAXToolBox](#) **MDCM** [MAX POS](#) [SuperZap](#) [UDCM](#) [WIP](#)

Installers

- [MDCM v2006 for MAX v4 \(Beta\)](#)
- [MDCM v2005 for MAX v3 1324+](#)
- [MDCM for MAX v3 < 1324](#)

Quick Launch

- [Bar Code Information](#)
- [Change History](#)
- [Creative Solutions](#)
- [Crystal Templates](#)
- [Installation Guide](#)
- [MDAC Downloads](#)
- [New Public Screens](#)
- [On Line Support](#)
- [Telnet Client: SimpTerm](#)
- [Users Manual](#)

Status and Information

Latest Builds by MAX Version		Updated: 04/04/2006
MAX (V4) :	MDCM 2006.0.1 Build 1	
MAX (1324+) :	MDCM 2005.0.1 Build 42	

It is very important to be compliant with MAX Gold Standards and to make the current MAX DLL's available. Please see the Installation Guide.

Recent Enhancements:

- New FastRepetitive Production Screen: (Screen#181) Intended for One-Scan production reporting and allows partial issues of back flushed components. Writes a message to transaction history identifying shortages.
- Repetitive option for large BOM's to be back flushed in back ground for quicker operator response (Requires Back Flush plug-in)
- ScreenShaper updated to be compatible with multiple language versions of Windows.
- When using UDFKEY_01 for part look up and not found a match against PRTNUM_01 will be made, so that both can be used.
- Labor: new switch to reset a posted good quantity to the allowable quantity with a warning message and beep. If processed will trigger D + Q as a notification.
- New Repetitive Production Screen: (Screen#180) allows partial issues of back flushed components. Writes a message to transaction history identifying shortages.

